

# XYLAZINE TEST STRIP INSTRUCTIONS

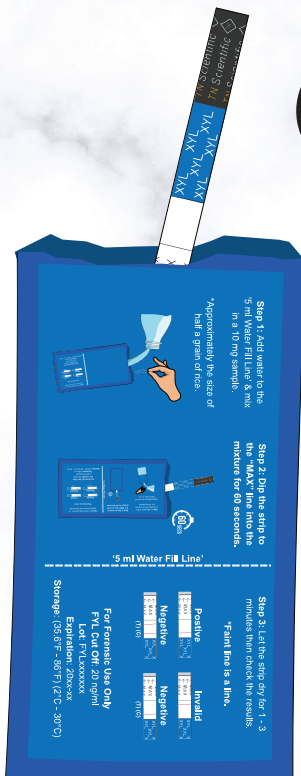
(WITHOUT MEASURING EQUIPMENT)

**STEP 1:** ADD WATER UP TO THE '5 mL WATER FILL LINE' AS INDICATED ON THE PACKAGE, AND MIX IN A 10 MG SAMPLE.

**\*APPROXIMATELY THE SIZE OF HALF A GRAIN OF RICE.**

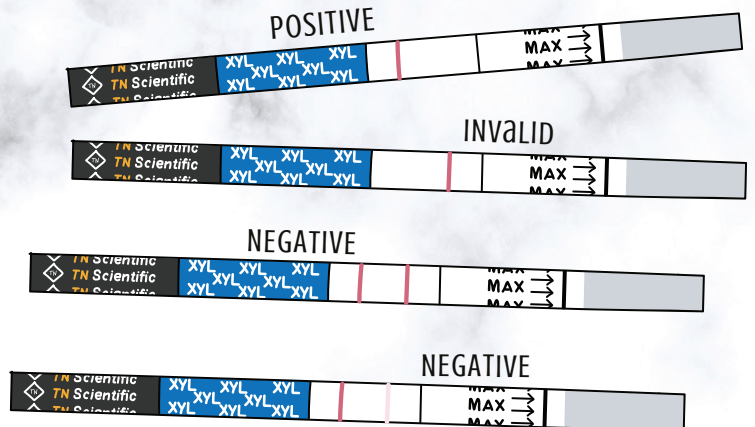


**STEP 2:** DIP THE STRIP TO THE "MAX" LINE INTO YOUR MIXTURE FOR 60 SECONDS.



**STEP 3:** LET THE STRIP DRY 1-3 MINUTES, THEN CHECK RESULTS.

**\*FAINT LINE IS A LINE.**



(C) (T)